

**Features:**

- \* Recommended 28AWG 1.27mm(0.05") flat cable.
- \* Plug directly into PCB.
- \* 8,10,14,16,18,20 pin in 2.54mmX7.62mm center.
- \* 24,28,32,40 pin in 2.54mmX15.24mm.

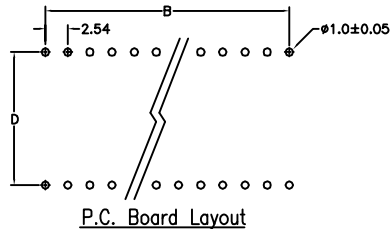
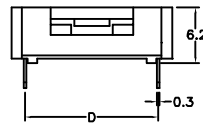
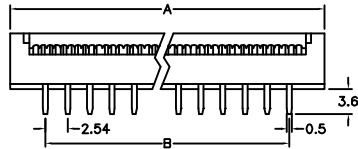
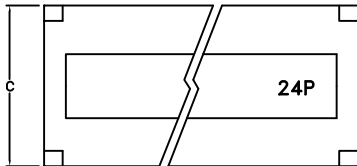
**Material:**

**Housing:** 30% Glass filled PBT UL94V-0 Black or Grey.  
**Contacts:** Phosphor Bronze.  
**Plating:** Selective gold plated: gold plated on mating area and nickel plated on wire cutting area.  
 Gold plated over nickel.  
 Tin plated over nickel.

**Cable:** 1.27mm (0.050 ) pitch flat cable.

**Electrical Characteristics:**

**Current Rating:** 1 AMP.  
**Insulator Resistance:** 5000MΩmin. at DC 500V.  
**Contact Resistance:** 20mΩmax. at DC 100mA.  
**Operating Temperature:** -55°C ~ +105°C.



P.C. Board Layout

Position	Dimension			
	A	B	C	D
8	14.25	7.62	10.60	7.62
10	16.68	10.16	10.60	7.62
14	22.70	15.24	10.60	7.62
16	25.10	17.78	10.60	7.62
18	26.92	20.32	10.60	7.62
20	29.70	22.86	10.60	7.62
24	34.78	27.94	18.18	15.24
28	39.92	32.78	18.18	15.24
32	44.40	37.86	18.18	15.24
40	55.20	48.26	18.18	15.24

**Ordering information**

IDC03- 40                      2                                      B  
 Series    No. of                      2: Tin Plated                      B: Black  
             Pin Count                3: Selective Gold Plated        Y: Grey  
     1: Gold Plated